



Weekly Newsletter

Living to Learn, Learning to Live



08.09.23

REACH FOR THE STARS

KEY DATES

21.09.23 9am - SEND Parent Coffee Morning

29.09.23 8:30am - MacMillan Coffee Morning

05.10.23 - Reception Reading Meeting and Stay and Learn Session (More details to follow)

W/C 16.10.23 - KS1 Stay and Learn Sessions (More details to follow)

W/C 23.10.23 - KS2 Stay and Learn Sessions (More details to follow)

27.10.23 3:15pm - Finish for half term

06.10.23 - Return to school for Autumn 2

06.10.23 9am - ASD Parent Coffee Morning

W/C 20.11.23 - Parents' Evening Week

07.12.23 - EYFS Open Day

08.12.22 - Christmas Jumper Day

22.12.23 2pm - Finish for Christmas

Welcome back to Wellesbourne for the 2023-24 academic year!

It has been wonderful to see our children back in school looking so smart and ready for their new year group! We have had a great first week back and the children have really impressed their new teachers with their attitudes and behaviour. We have a number of new staff at Wellesbourne this year who are settling in well and already feel like part of the team!

Our value for this half term is **RESPECT**. The children have been spending time getting to know their new teacher and thinking about their goals for the year ahead. We have had a fantastic time talking about aiming high - look out for some pictures of our new displays in school over the next few weeks!

As always, we are promoting the importance of **ATTENDANCE**. It is hugely important that your child is in school, on time, every day. Please ensure you only keep your child off school if it is absolutely necessary. This avoids your child missing important learning and fun experiences we have in school!

Have a lovely weekend!

Miss Howard

Effort



Cooperate



THIS WEEK IN PSHE

This week in our PSHE assembly we talked about how a new school year is a fresh start, setting goals and aiming high. We came up with ideas that would help us to achieve our goals in the future.

Next week, the children will have an assembly delivered by a charity called Children's University to launch this within school. More information for parents will follow after this assembly!

Please talk to your child about respect and ways to show respect in the family home and local environment to help further develop their thinking.

Year One Phonics

This week in Phonics

This week in Phonics, Year 1 have been recapping Phase 3 sounds.

We have looked at:

'j' - jet, jam, jug
'v' - vet, van, visit
'w' - wet, wig, will

Can you read this sentence?
The vet in the van had a wig in a jug.

Look for these sounds in your home reader.

ATTENDANCE is one of our school values

As a school we are striving to achieve at least 97% attendance each week. Attendance this week has hit this target on three days, however this needs to be every day!

OVERALL -

Monday - **97.6%**
Tuesday - **96.3%**
Wednesday - **96.5%**
Thursday - **97.0%**
Friday - **97.1%**

Well done to RSR, 1DB and 4LH who achieved 100% attendance this week! We are so excited by this - you will receive Champions' Breakfast next week!

Attend



Honest



Lovely News!

Congratulations to Mrs Abley who gave birth to a baby boy last month! Baby Charlie was born on 21st August weighing 9lb 5oz. We can't wait to meet him!



Congratulations also to Miss Parr who got married over the summer holidays and has returned to school as Mrs Grimmer! Mrs Grimmer will be with us until Friday 29th September, when her Maternity Leave will start.

New Staff

A huge welcome to our new staff who have joined us this year! We hope you have had a lovely first week!

Mr Hogan - 4LH Class Teacher

Miss Bush - 1DB Class Teacher

Miss Summers - Music and Computing PPA Teacher

Mrs Winton - EYFS PPA and ECT Cover Teacher

Miss Wall - Y4 Teaching Assistant

Mrs Krzewinska - Y3 Teaching Assistant

Miss Shepherd - Sports Apprentice

Respect



MacMillan Coffee Morning

Please join us on **Friday 29th September** to support MacMillan Coffee Morning at Wellesbourne. Breakfast items, drinks, cakes and fruit will be available to buy at the front of school when parents drop their children off in the morning.

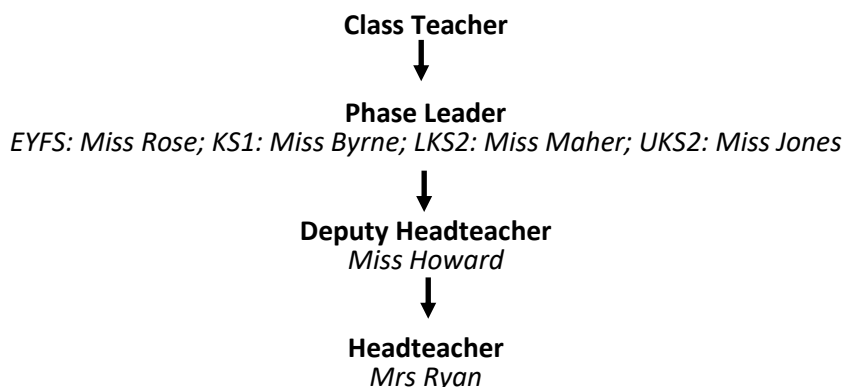
Lines of Communication 2023-24

In order to ensure parental queries are addressed promptly, we would like to clarify lines of communication within school.

If you have a query related to your child, in the first instance this should be communicated to your child's **class teacher**.

The class teacher knows your child best and is the one who spends every day with them in class. If your query is not resolved, or you are concerned about the outcome, your query should then be taken to your child's **Phase Leader**. **B**

The next step after speaking to a Phase Leader is to speak to **Miss Howard (Deputy Headteacher)** followed by **Mrs Ryan (Headteacher)**. Please contact the School Office to make an appointment with a member of staff, ensuring this line of communication is followed.



We understand that there are instances where parents may wish to speak to other members of staff regarding other areas of school. Please contact the School Office who will be able to put parents into contact with the staff listed below.

Safeguarding/SEND – Mrs Willshire

Pastoral – Miss Moore/ Mrs Ellis

Attendance – Mrs O'Donnell

Administration (registration forms/ medical notes/ dates/ absence/ dinner money) – Miss Toole & Mrs Segar

Thank you for your continued support!

What Parents & Carers Need to Know about LIVE STREAMING

Live streaming involves broadcasting and watching videos online in real time, often on social media or via platforms like YouTube and Twitch. Viewers can interact through comments, chats and reactions during the broadcast: such instant engagement makes this an exciting way to share experiences, learn from others and build digital communities. Despite the many positives, live streaming also creates a potential platform for unsuitable content and poses some risks to children: it's essential to keep privacy and safety in mind and comply with each site or app's age restrictions.

WHAT ARE THE RISKS?

LACK OF AGE VERIFICATION



Despite their age restrictions, some platforms don't require proof of age at sign up – meaning that anyone can register for an account (and potentially pretend to be older or younger than they actually are). In many cases, this means that young live streamers can never be totally certain exactly who they are broadcasting to and who is engaging with their live stream.

DISCLOSING PERSONAL INFO

A characteristic of live streaming is the ability for videos to be instantly shared worldwide. Without the correct privacy settings enabled, a child could inadvertently reveal personal information or their location, making them vulnerable to online predators or identity theft. It's wise to regularly check the privacy settings (and what data is being shared) on any apps your child has signed up for.

ANYTHING COULD HAPPEN

As the video streams are live, children might encounter (or inadvertently share) inappropriate content. Most live-streaming apps have rules to prevent this and monitor their services, also providing report buttons where content can be flagged for review. It may not be dealt with instantly, however, meaning that your child could be further exposed to harmful content during a live stream.

AGE RESTRICTION

13+
16+
18+

Age varies by platform

UNAUTHORISED RECORDINGS



Each live streaming platform stores completed videos for different periods (Twitch saves broadcasts for 90 days, for example, while Facebook and YouTube remove them only at the creator's request). Deleting a video, though, doesn't always stop it from being shared: in some cases, streams have been illegally recorded (or screenshots taken) by certain viewers and redistributed on other sites.

ROGUE CONTENT CREATORS



Children can also watch other people's live streams, which could potentially contain anything at any time (such as nudity, drug use or profanity). Most apps claim to monitor live streams and will stop any that don't adhere to their guidelines – but with millions of streams per day, it's complicated to regulate them all, so children could be exposed to inappropriate content without parents knowing.

DANGER OF GROOMING



There are increasing reports of children being coerced into performing "suggestive acts" by strangers on some live-streaming apps. Due to the lack of verification required for certain apps, almost anyone can sign up to these services (including anonymously or under a fake identity). It's vital, therefore, to ensure the correct safety measures are in place before your child begins live streaming.

Advice for Parents & Carers

PUT PRIVACY FIRST

Through the streaming app's settings, switch your child's account to "private", so only their friends and followers can see their broadcasts. You could also turn off the live chat, shielding your child from any upsetting comments – although viewers' feedback is often seen as an integral part of the fun. Identify any nearby items (such as school uniforms or visible landmarks) that could give away your child's location.

MANAGE MULTISTREAMING

Some apps and sites let users stream their content through multiple social media platforms at once. A broadcast on SteamTV, for example, can be shared on YouTube, Twitch, X and Facebook. If the accounts are linked, the privacy settings can differ on each of these, so we'd suggest only streaming via one platform at a time to maintain greater control over who's watching your child's videos.

GET INVOLVED YOURSELF

Research suggests a significant number of streams show a child on their own, often in a supposed safe space like their bedroom. If your child wants to live stream, ask if you could be present because you're interested in how it works. You could even set up your own account to gain a more detailed knowledge of what your child talks about in their live streams – and who they're broadcasting to.

TALK ABOUT LIVE STREAMING

Try to start with positives before discussing potential risks. You could ask which live streaming apps your child likes and how they use them. Do they just watch streams or create their own? Explain why it's unwise to reveal personal information while streaming (even to friends). If you feel your child's too young for live streams, explain your reasoning to them and perhaps agree to review this decision in the future.

CONSIDER THEIR ONLINE REPUTATION

As the broadcasts are live, it often causes the misconception among young people that whatever happens in their video simply 'vanishes' once the stream ends. However, videos can stay online indefinitely or be recorded by other users. It's important that your child understands what they do and say in a live stream could potentially damage their online reputation and, quite possibly, be seen by prospective future employers, colleges or universities.

Meet Our Expert

Mark Smith is Head of Digital Learning at Thornes, Gillingham, London. Recognised in the EdTech 50 UK Awards Yearbook 2022 for his efforts in the digital transformation of Dulst Town Primary School and Tower Hamlets, he is also a Google for Education Certified Trainer and guest lecturer at University College London on the integration of technology across the curriculum.



Source: <https://www.in.org.uk/media/23/3nc2/distribution-of-captures-of-live-streamed-child-sexual-abuse-final.pdf>